

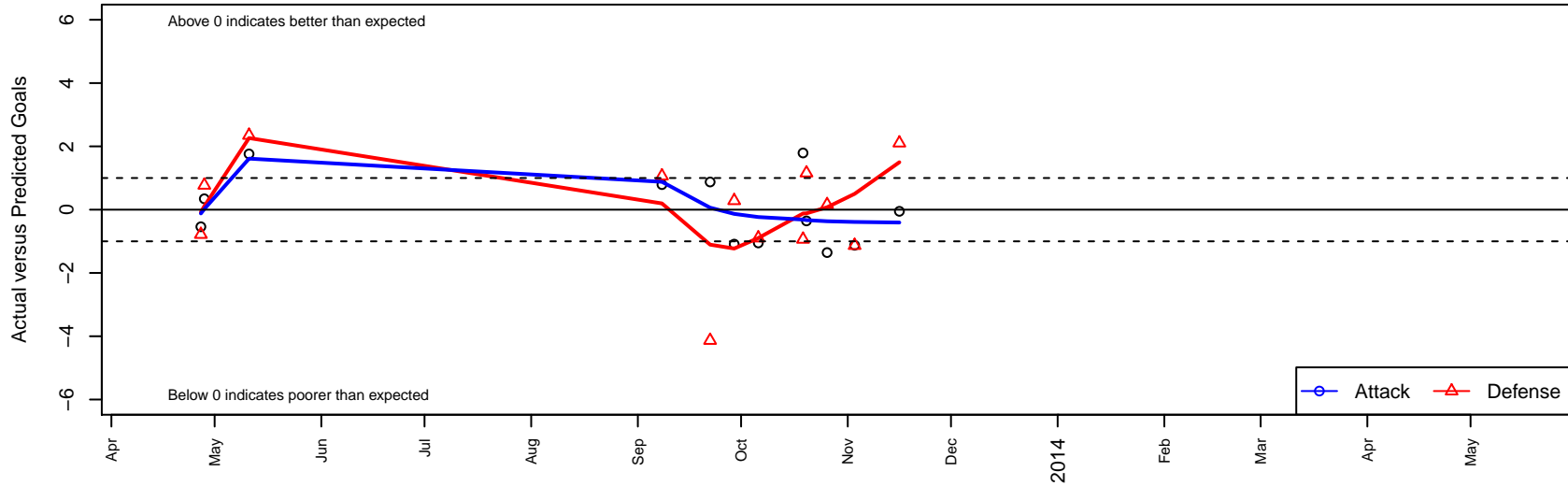
Spokane Scotties Schuh B98

Spokane Scotties
 Spokane, WA
 B98 total strength=1105
 attack=5.38 defense=1.54
 fall league = PSPL-Inland U16
 alt names used:
 Spokane Scotties Schuh B98
 Spokane Scotties Schuh
 Spokane Scotties - Schuh

Venues played:
 PSPL In-Copa Spr U14
 PSPL-Inland U16



Spokane Scotties Schuh B98
 Dots are actual minus expected GF (blue circles) and GA (red triangles).
 Blue line is smoothed change in attack strength. Red is smoothed change in defense strength.



| | date | home | | away | | venue | pred.home | pred.away |
|-------|-------------|----------------------------|---|----------------------------|---|----------------------|------------------|------------------|
| 18669 | 2013-11-16 | FC Spokane White B97 | 4 | Spokane Scotties Schuh B98 | 2 | PSPL-Inland U16 | 6.1 | 2.05 |
| 17391 | 2013-11-03 | Spokane Scotties Schuh B98 | 0 | Breakers Davey B98 | 6 | PSPL-Inland U16 | 1.1 | 4.87 |
| 16123 | 2013-10-26 | Spokane Scotties Schuh B98 | 0 | Sabers White B97 | 5 | PSPL-Inland U16 | 1.4 | 5.16 |
| 15494 | 2013-10-20 | Sabers White B97 | 4 | Spokane Scotties Schuh B98 | 1 | PSPL-Inland U16 | 5.2 | 1.36 |
| 15180 | 2013-10-19 | Breakers Thielman-Cox B97 | 9 | Spokane Scotties Schuh B98 | 3 | PSPL-Inland U16 | 8.1 | 1.21 |
| 13507 | 2013-10-06 | Spokane Scotties Schuh B98 | 1 | FC Spokane White B97 | 7 | PSPL-Inland U16 | 2.1 | 6.10 |
| 12469 | 2013-09-29 | Spokane Scotties Schuh B98 | 3 | Sabers Ennis B98 | 1 | PSPL-Inland U16 | 4.1 | 1.28 |
| 11594 | 2013-09-22 | Breakers Davey B98 | 9 | Spokane Scotties Schuh B98 | 2 | PSPL-Inland U16 | 4.9 | 1.12 |
| 9636 | 2013-09-08 | Spokane Scotties Schuh B98 | 2 | Breakers Thielman-Cox B97 | 7 | PSPL-Inland U16 | 1.2 | 8.06 |
| 356 | 2013-05-11 | KVJSA Ellensburg FC B98 | 2 | Spokane Scotties Schuh B98 | 5 | PSPL In-Copa Spr U14 | 4.3 | 3.24 |
| 284 | 2013-04-28 | Spokane Scotties Schuh B98 | 3 | Spokane Scotties McCoy B98 | 0 | PSPL In-Copa Spr U14 | 2.7 | 0.77 |
| 248 | 2013-04-27 | Cobra Venom B98 | 6 | Spokane Scotties Schuh B98 | 0 | PSPL In-Copa Spr U14 | 5.2 | 0.54 |